

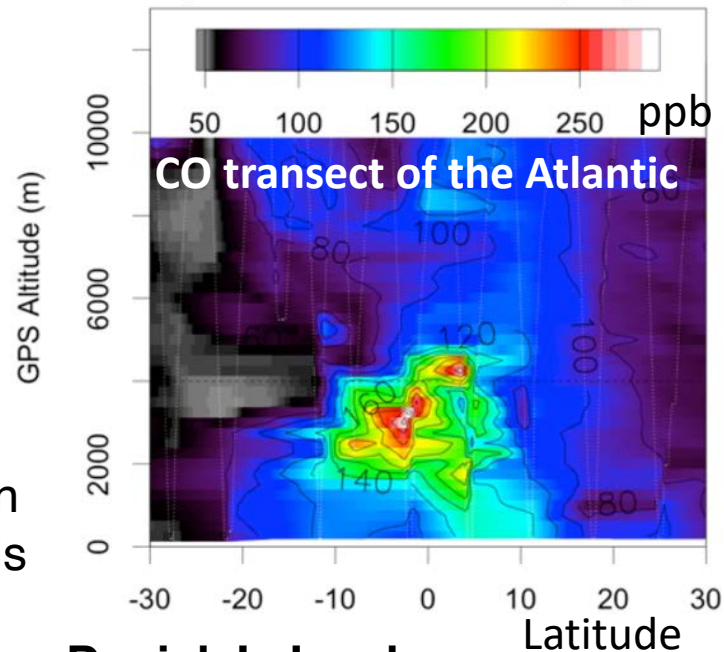
# Active-learning for modeling & data analysis in your research!

## Environmental Modeling & Data Analysis EPS 236 Fall 2021

*A graduate and advanced undergraduate course offered by  
Harvard's Dept. of Earth and Planetary Sciences and  
John A. Paulson School of Engineering and Applied Science*

### Course Topics

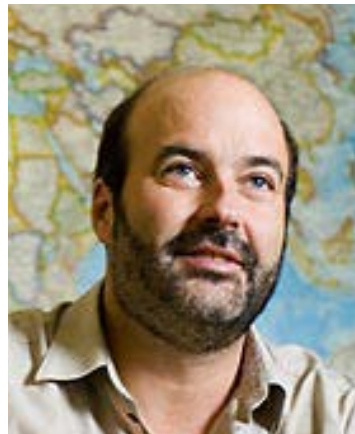
Principles of Modeling  
systems and data  
Data Visualization  
Statistical Inference  
Uncertainty estimation  
Time Series Analysis  
Numerical Methods  
Bayes' Theorem, Optimization  
Kalman Filter, Adjoint Methods



**Steven C. Wofsy**



**Daniel J. Jacob**



**Website and Syllabus:** <https://canvas.harvard.edu/courses/92071>  
**Wednesday and Friday, 3:00 – 4:15 pm\***